

St Kentigern's Academy

Stakeholder Consultation

- Introduction
 - Analysis and Opportunity
 - A new St. Kentigern's
 - Landscape
 - Programme
 - Comment and Discussion
-
- Thank You!

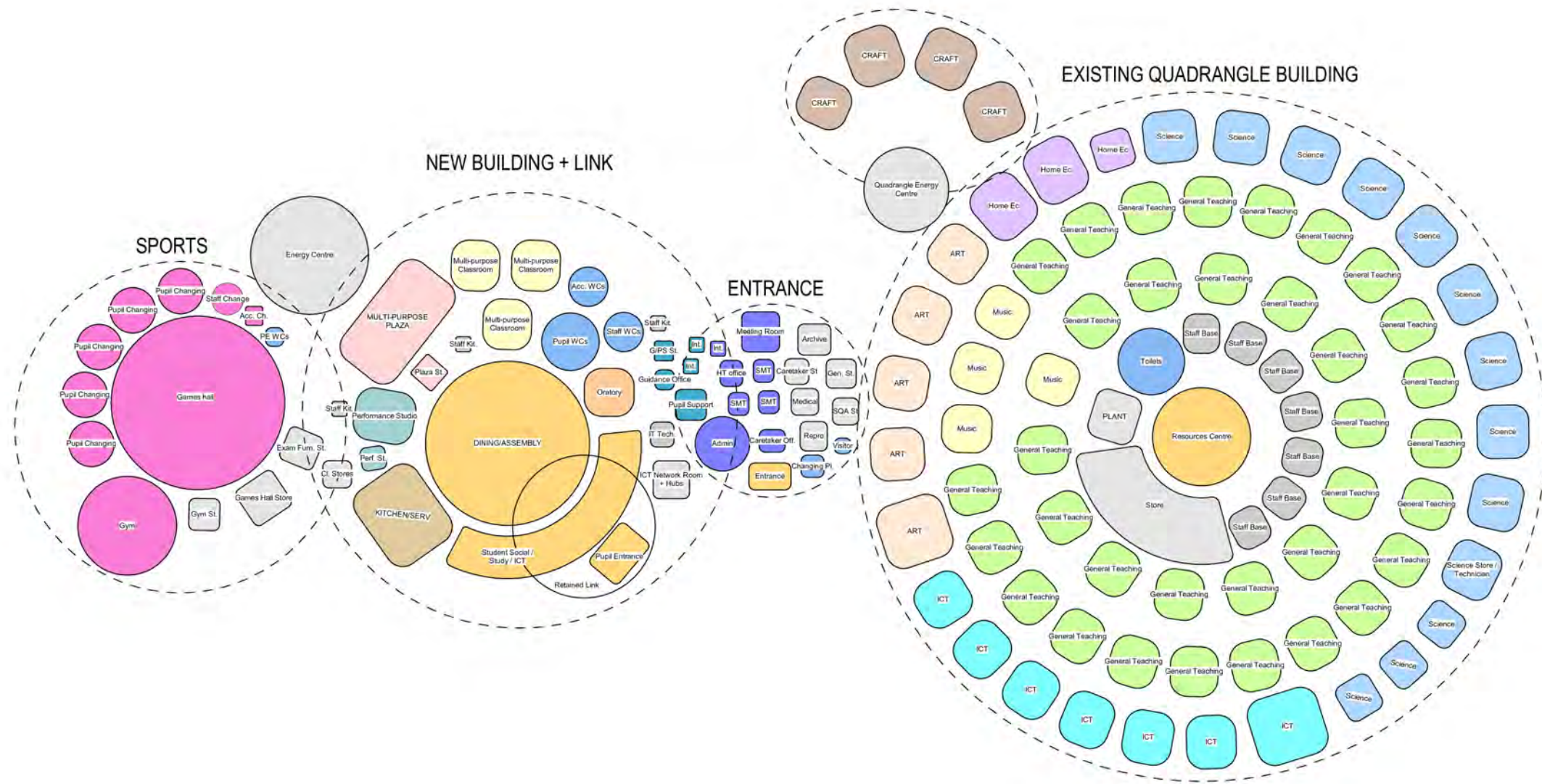
Introduction

Analysis & Opportunity

St. Kentigern's : Context and site analysis



St. Kentigern's : Adjacency diagram



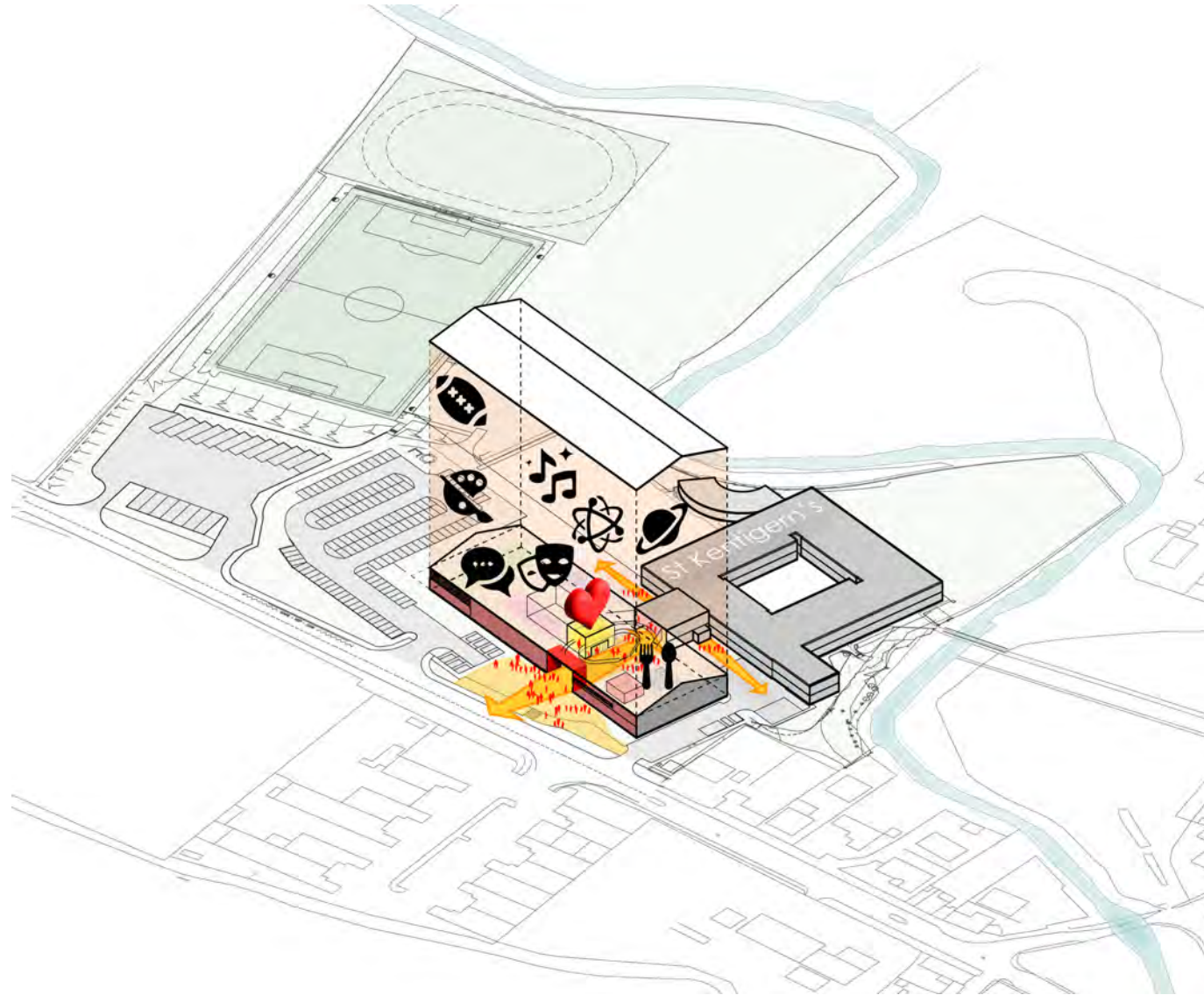
St. Kentigern's : Site strategy and building diagram

There is an excellent opportunity to re-imagine the overall Campus thus creating a holistic Campus that addresses the wider Community.

An exciting multi-functional open plan atrium is created providing a new social heart for St Kentigern's, a 'Living Room' with the opportunity for socialising, peer to peer informal learning, events and a showcasing of Learning.

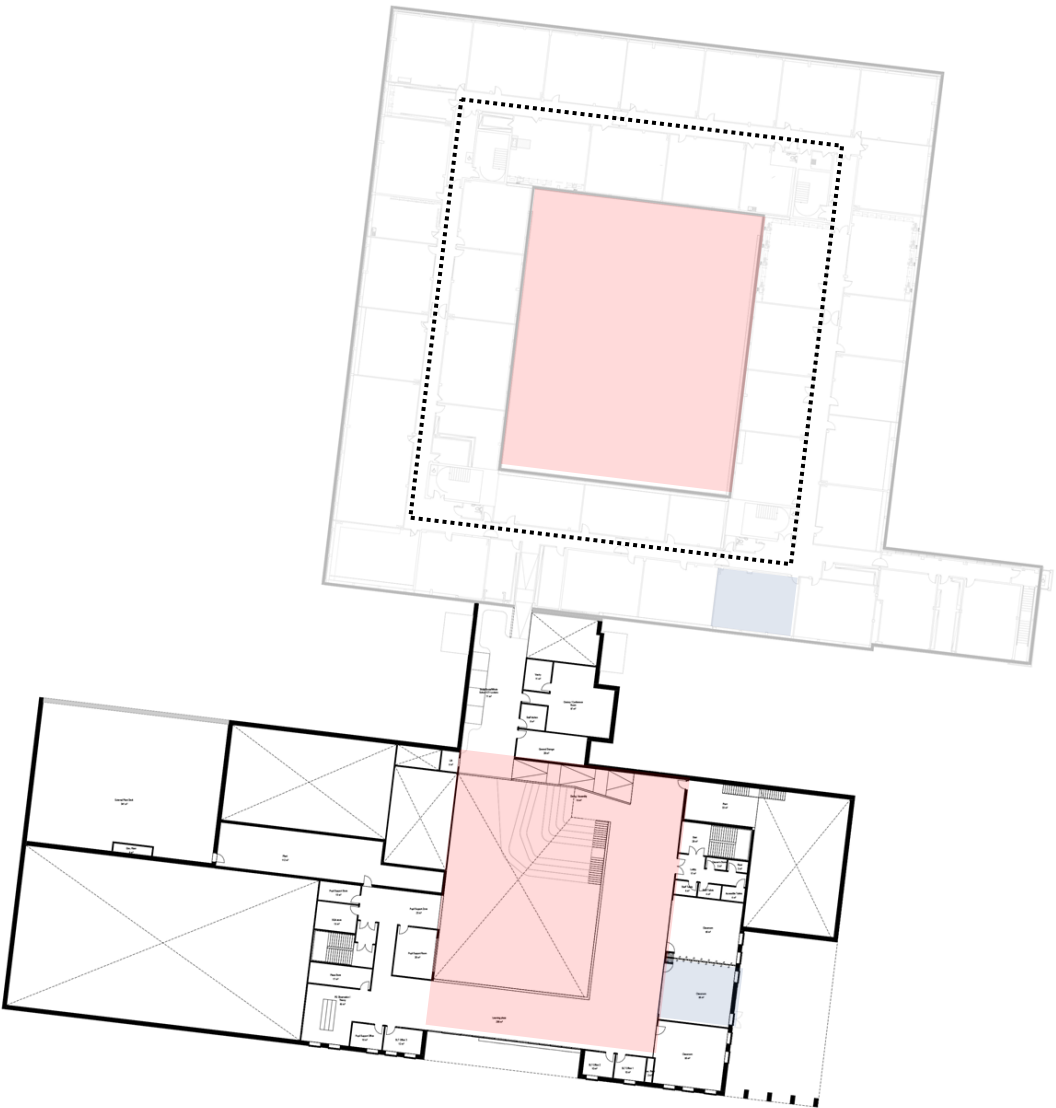
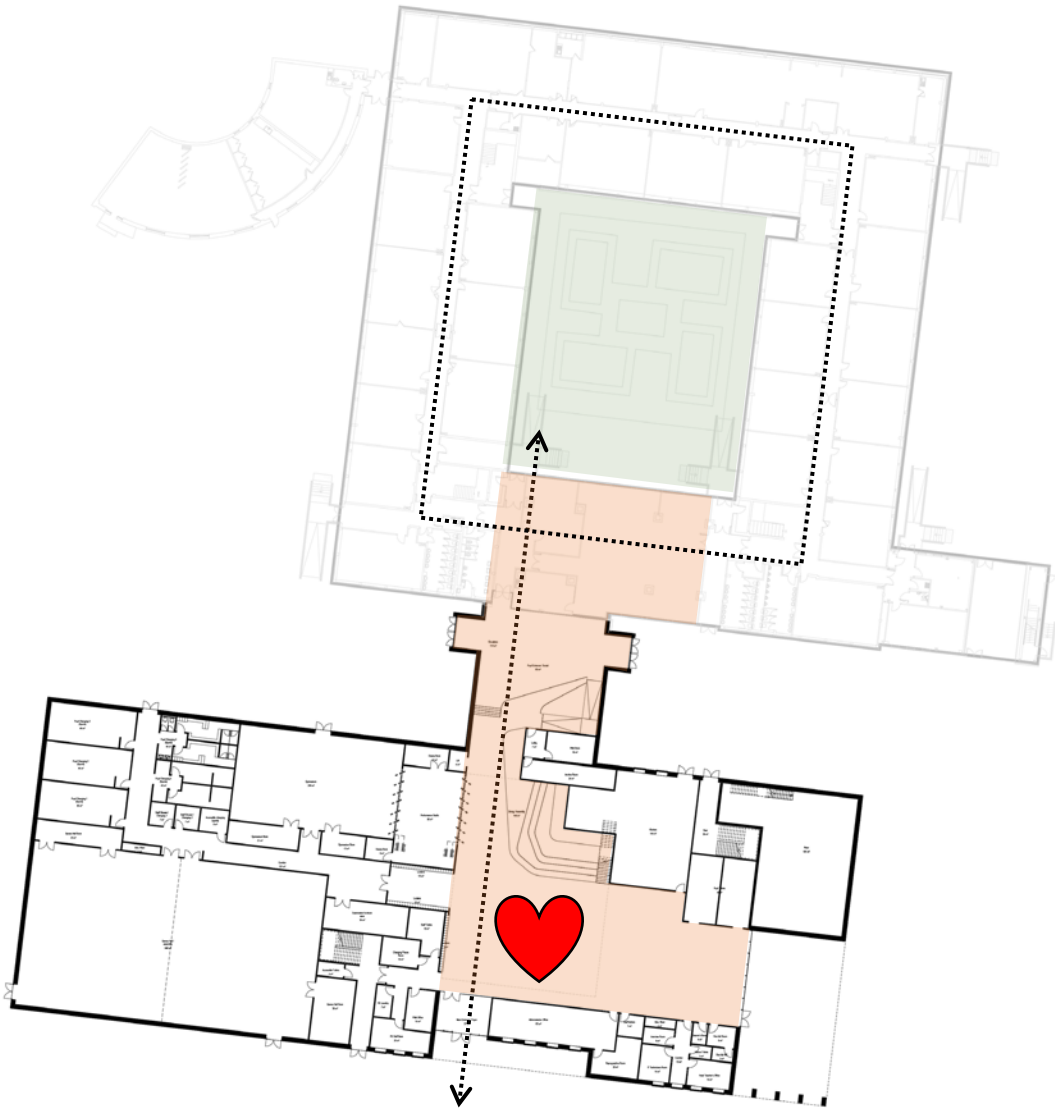
PE and a multi-purpose Learning Plaza and Classrooms are co-located within the new building along with Dining, Social, Admin. and Nurture

A simple enclosure and strong building form houses the new St Kentigern's.

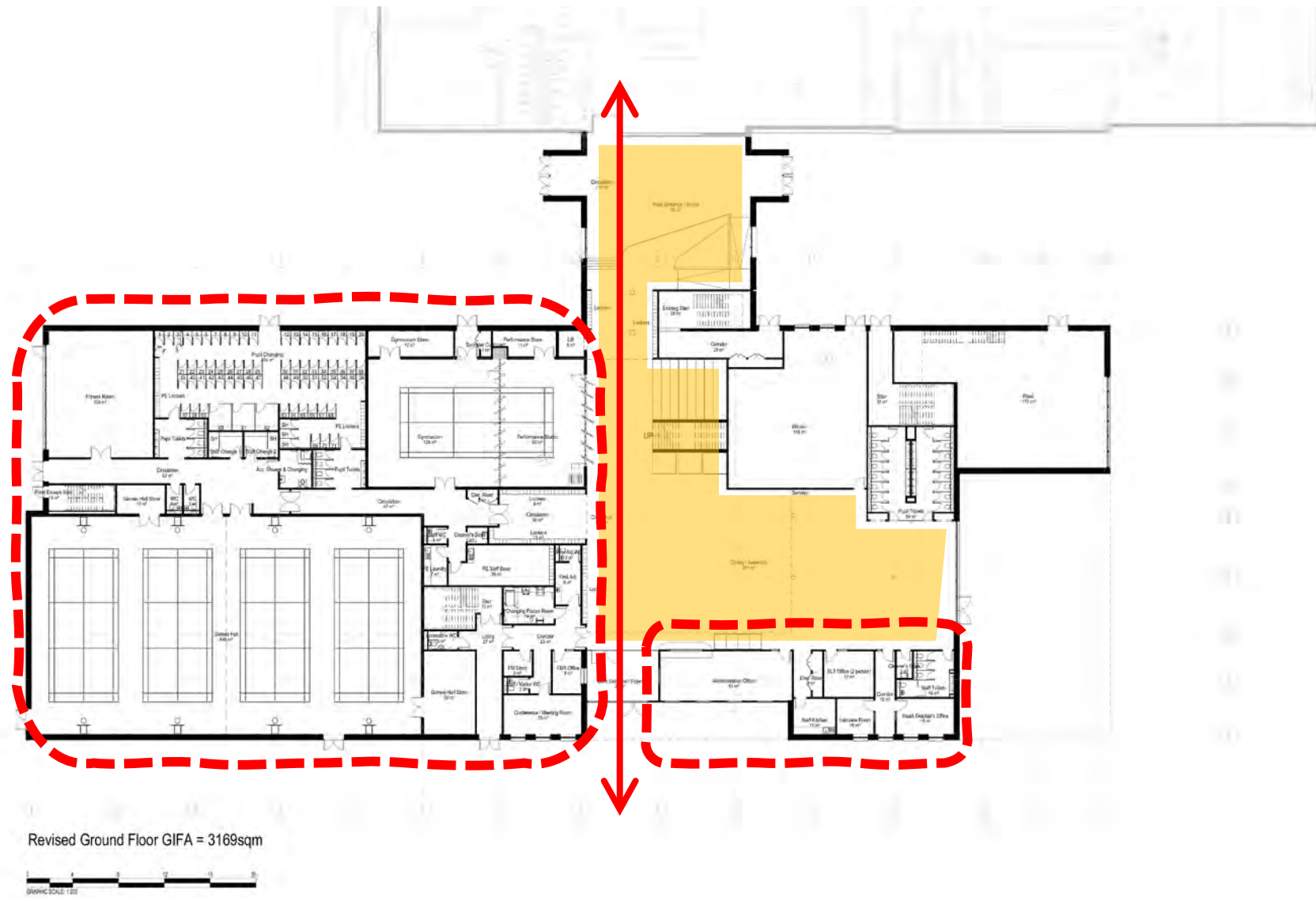


A new St. Kentigern's

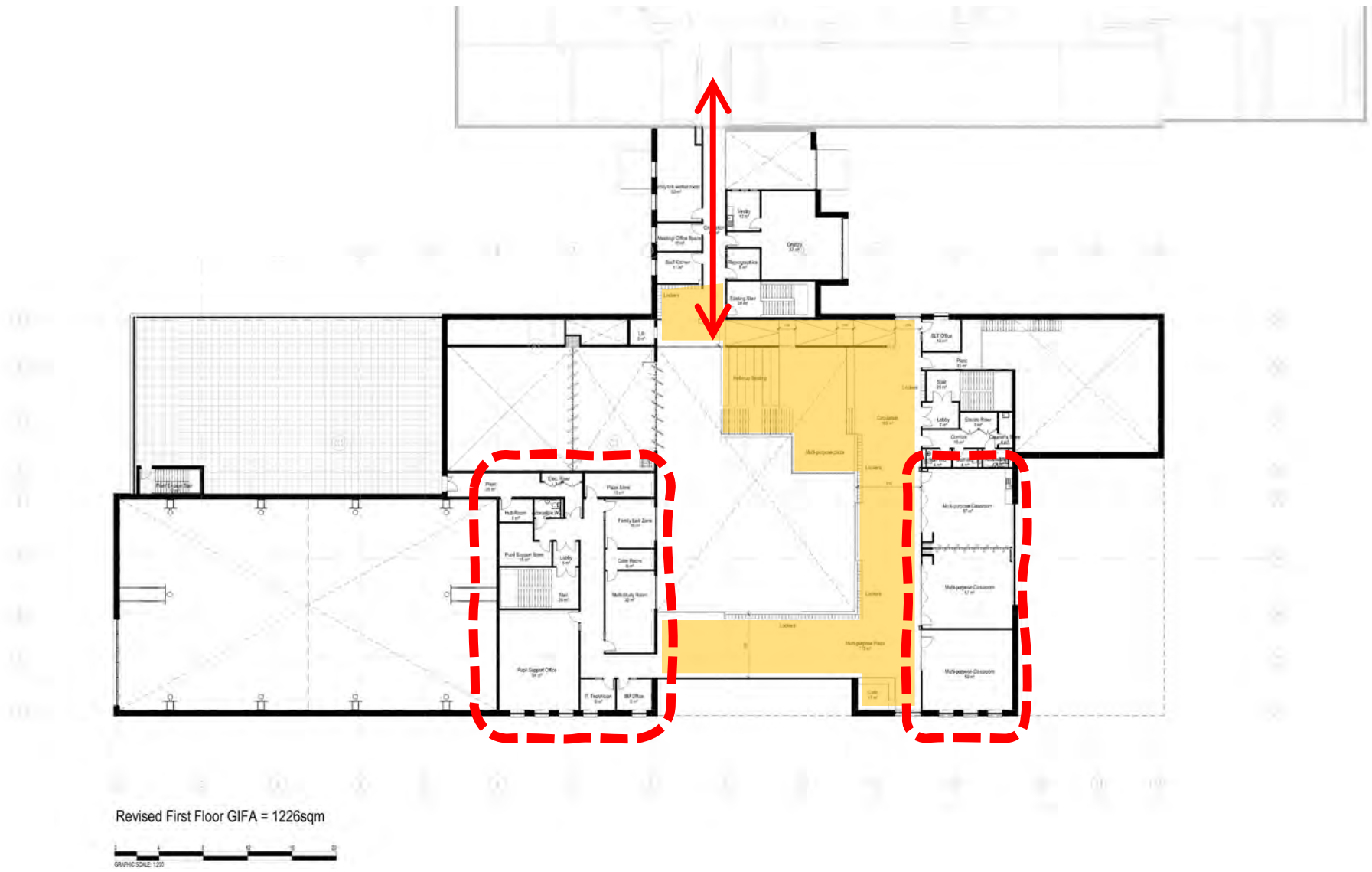
St. Kentigern's : Overall curriculum delivery and future opportunity



St. Kentigern's : General Arrangement Plan – Ground Floor



St. Kentigern's : General Arrangement Plan – First Floor



St. Kentigern's : A pragmatic opportunity



Configuration updated in conjunction with WLC to enhance flat floor learning provision

St. Kentigern's : The Heart of the School



St. Kentigern's : Learning Plaza, view 1



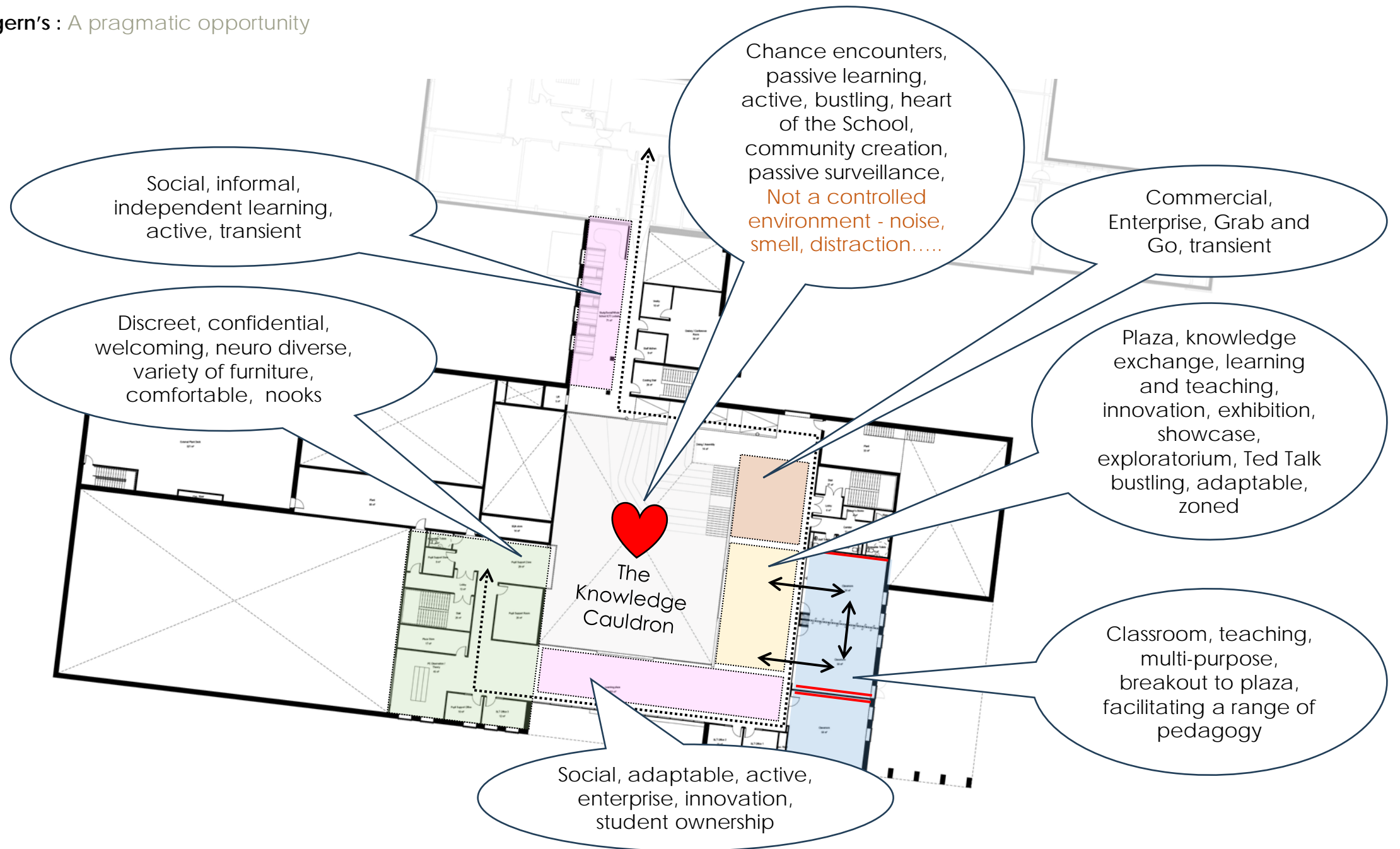
St. Kentigern's : Learning Plaza, view 2



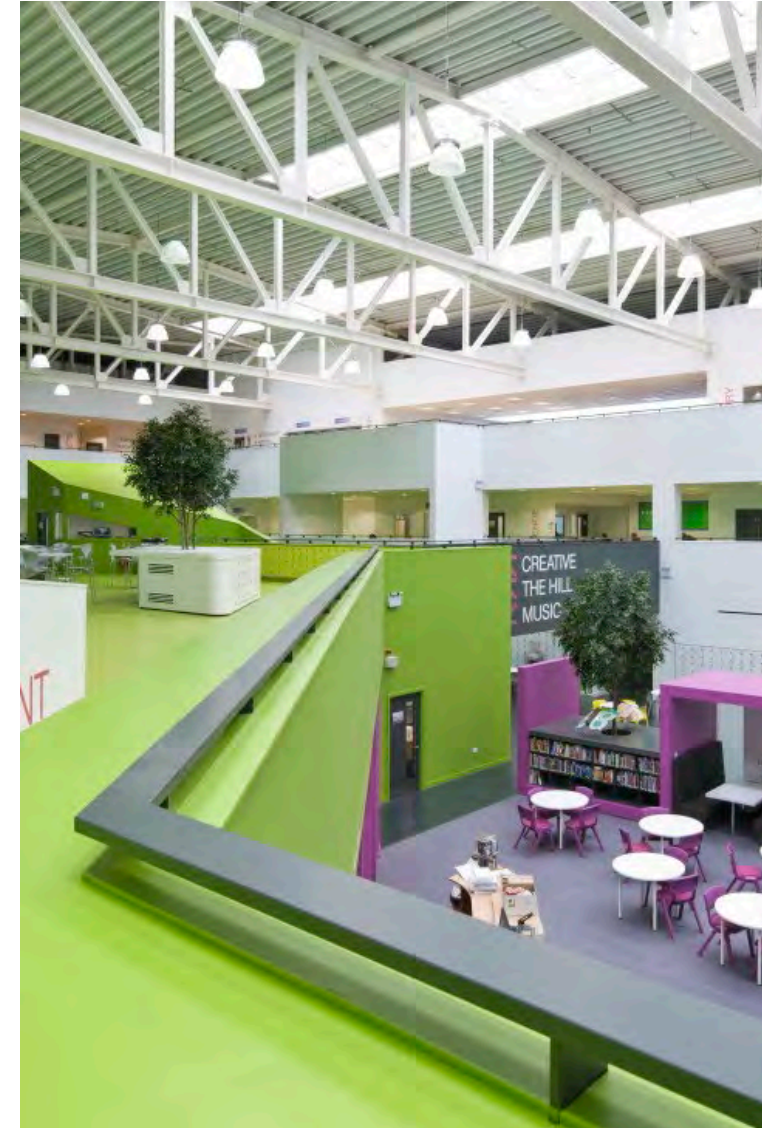
St. Kentigern's : Innovation Deck



St. Kentigern's : A pragmatic opportunity



St. Kentigern's : Learning Landscape



St. Kentigern's : Atrium precedents



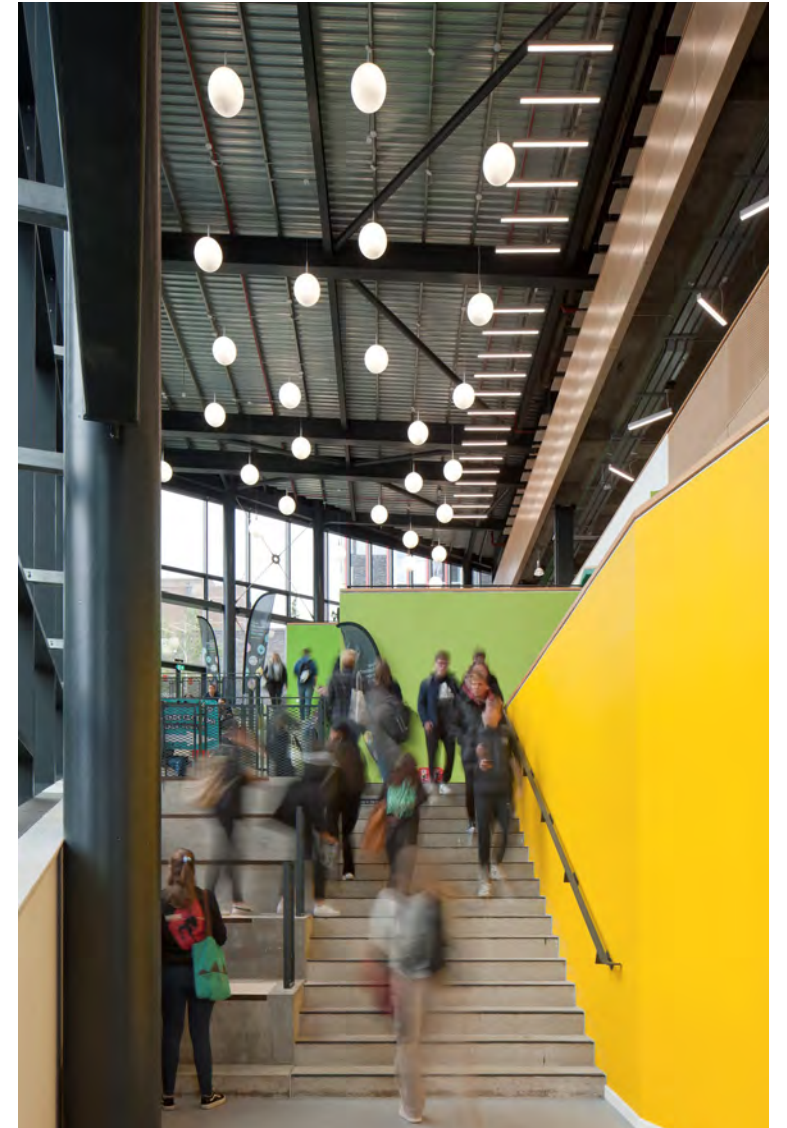
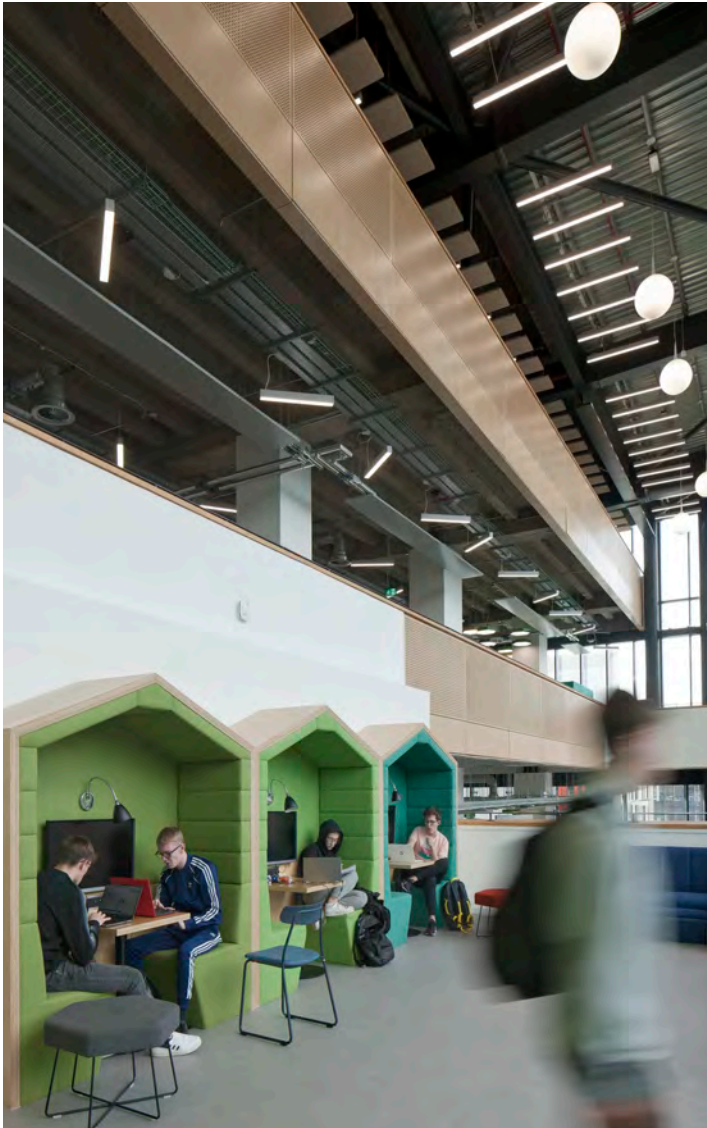
St. Kentigern's : Atrium precedents



St. Kentigern's : Higher Education precedents



St. Kentigern's : Higher Education precedents



St. Kentigern's : Building massing and sense of arrival



St. Kentigern's : Building massing and sense of arrival



St. Kentigern's : Building massing and sense of arrival



Landscape

St. Kentigern's : Site Plan

- ① Proposed Entrance Plaza
- ② Proposed Dining Terrace
- ③ Social & Games Zone
- ④ Pupil West Entrance
- ⑤ Pupil East Entrance
- ⑥ Proposed Service Zone
- ⑦ Proposed Car Park
- ⑧ Existing Bus Parking



Programme

- Hub Stage 1 approval – 11 June 2024
- Financial Close for the enabling works (DBDA) – 12 June 2024
- Completion of the new car park – 12 August 2024
- Financial Close for the main works (DBDA) – 18 February 2025
- Construction completion – 6 May 2026

Comment & Discussion



BDP.