

**St Kentigern’s Academy  
Minute of Parent Council**

<b>Date: 26<sup>th</sup> October 2023</b>	<b>Present:</b> K Binnie (Chair), A Sharkey, S Young, B Melia, S Leek, K McKeown, S Davidov, L Constanza, L Hammersly, W Hearty, V Muchabaiwa, M O’Loughlin, E Seka, C Horne, I Haq S Dunne, C Gill & S Cameron
	<b>Apologies:</b> A Keenan & C Carbury

Welcome	KB: Welcome all to our first meeting of the new session.	
Minute of the Previous Meeting.	Proposed: S Leek Seconded: K McKeown	
Matters arising from the Previous Minute	KB: No outstanding issues.	
Correspondence	KB: No correspondence received.	
On-going Works	<p>SC: Has been appointed as Quality Improvement Officer. Summary update on current position: -</p> <ul style="list-style-type: none"> <li>• All areas for students &amp; staff are safe.</li> <li>• High quality L&amp;T continues at St Kentigern’s.</li> <li>• RAAC affected areas of the school are closed.</li> <li>• New TU’s have been installed housing the Dining Hall, Music, CDT and soon to be Mod Langs. There is also an area for some indoor PE activities.</li> <li>• We continue to have dialogue with colleagues, Professional Associations &amp; students.</li> <li>• We are working with</li> </ul>	

	<p>partners and schools to ensure students receive their PE entitlement.</p> <p>Next Steps: -</p> <ul style="list-style-type: none"><li>• Admin staff and Student Support staff will be relocated.</li><li>• Demolition of RAAC affected area will commence following removal of asbestos and RAAC panels. This phase will take around one year.</li><li>• Following that, construction will begin.</li><li>• The Authority will also upgrade the main teaching block over a period of time.</li><li>• Current projection is that cost of rebuild will be £35M-£40M</li></ul> <p>AS: There has been no reduction in subjects / classes offered to students due to building issues.</p> <p>AS: We have reduced number of car parking spaces, therefore, the bus park has been reconfigured. This will continue to be a concern that we'll monitor.</p> <p>Questions: Senior Phase PE – will travel time have an impact on course completion.</p> <p>No, S5/6 receive 6 periods per week (most schools offer 5). This will ensure there is enough time. We do acknowledge this may be an issue for S4.</p> <p>Has the Scottish Government committed to funding this</p>	
--	---	--

	<p>project?</p> <p>WLC have committed £20M from Reserves. Senior WLC colleagues are in discussion with SG officials.</p> <p>Expand on the Project Plan timescale.</p> <p>Removal of asbestos and RAAC affected panels are very labour intensive tasks. Then, demolition and removal of rubble is required before construction can commence.</p> <p>Who funds the cost of buses for PE?</p> <p>This cost is met by WLC; it is not from school devolved budget.</p> <p>How will design of new school look.</p> <p>We are looking at new build schools on a national &amp; international basis. There will also be full consultation with colleagues, students and the wider community.</p> <p>Will this impact on staff retention?</p> <p>Difficult to gauge, for many staff in the main teaching block, this has had minimal impact. There is a wider debate at national level about staff retention. It should be noted that our current vacancies are nearly all due to colleagues being promoted into other schools.</p> <p>Has the disruption had an adverse impact on student</p>	
--	---	--

	<p>behaviour.</p> <p>There is no disproportionate level to student behaviour to date, and we have procedures in place to deal with off-site issues.</p> <p>Will this impact on S1 roll in future years?</p> <p>Not anticipated, we have data from primary schools on their P7 numbers that indicate a usual level of students joining us in August.</p> <p>There are no communal spaces to allow wider whole school activities such as Stars in Their Eyes and school shows.</p> <p>Agreed, it is important to acknowledge the school is about more than academic achievement. The current dining hall has allowed us to have face-to-face House Assemblies. This year’s school show will be presented at Bathgate Regal Theatre.</p> <p>Social spaces and self-learning areas are limited.</p> <p>Acknowledged, we do have the social area and part of the dining hall available.</p> <p>Could we get an outdoor area with a canopy.</p>	<p>SC will investigate this with WLC colleagues.</p>
<p>Death of Hamdan Aslam</p>	<p>AS: Provide a full explanation of the incident and the subsequent actions over the following days.</p> <p>We continue to provide support to the family, students &amp; colleagues.</p>	<p>AS to continue to lead on support in tis area.</p>

	<p>Moving forward, we plan to organise a series of charity events in Hamdan’s memory.</p>	
School Captains	<p>AS: Welcome to St Ninian House Captains Betty Kanjewe &amp; Keeva Murdoch.</p> <p>Lead the Events Committee. There is a planned Prom Fashion Show showcasing pre-loved clothes and local business such as hairdressers and makeup. Entry to this event will be food donations which we’ll arrange to deliver to a local foodbank.</p> <p>Investigations have begun on researching a variety of S6 school trips to cater for student’s diverse requests.</p> <p>It is the committee’s intention to leave a legacy of pride and diversity for future students.</p>	
Head Teacher’s Report	<p>AS: Distributed to members.</p> <p>Question:</p> <p>Is there analysis of student results by gender?</p> <p>AS: S4 results were level. Unusually, compared with other WLC schools, S5 boys performed better.</p> <p>In S6, boys performed better at Higher level but girls performed better at Adv Higher level.</p>	Digital copy will be issued with minute.
Curriculum Update	<p>CG: Learning &amp; Teaching:</p> <p>Our focus this year is looking at assessment materials and how teachers use the data.</p>	CG will update future meetings as appropriate.

	<p>We have a L&amp;T Working Group – Pedagogy. They are tasked with Professional Reading &amp; Research.</p> <p>S3 students following BGE (Broad General education) are assessed to prepare them for Certificated Courses in S4 onwards.</p> <p>There have been changes to the TT due to staff vacancies in Health Food &amp; Technology Dept. Adverts have been placed for replacements.</p>	
	<p>A programme for Lunch clubs is being developed.</p> <p>An Assessment calendar will be distributed to S4/5/6 students to assist their planning. It also includes advice &amp; tips from older students based on their experience.</p> <p>Students sitting 5 Highers will have a mentor throughout the year.</p> <p>All students will receive support from their class teacher and regular Tracking will form discussions with Faculty PTC's.</p> <p>There are PSE Programmes for all students in S4/5/6.</p> <p>Supported Study Masterclasses will commence in December prior to the Prelims.</p>	<p>SM will update the PC on this at the next meeting.</p>
<p>School Fund Account</p>	<p>SY: We have a School Fund Account which is money raised from school activities but still subject to WLC Audit Procedures.</p>	

	<p>This year’s accounts have been audited and will be submitted to WLC by 31<sup>st</sup> October 2023.</p> <p>Question Use of Ipayment to collect charity funds.</p> <p>SY: This is to allow payments for example, when we have a non-uniform day.</p> <p>Question Some primary schools have a set-up whereby parents are encouraged to use a specific link before making online purchases. From this, the school receive commission.</p>	<p>SY: We don’t have this at present but I’ll investigate and report back to a future meeting.</p>
<p>Poverty Group Initiatives</p>	<p>CG: Mrs Porch has formed a new student group looking at the cost of the school day.</p> <p>To date, we have created “Help Yourself Trollies” containing personal hygiene goods. Students are welcome to collect these – “no questions asked”.</p> <p>The next campaign is to request pre-loved winter clothes donations which will be distributed as required.</p> <p>AS: It should be noted we have around 30% of students living in SIMD decile 1 and 2. This represents living in very deprived areas.</p> <p>Question. Has the Participatory Budget been spent?</p> <p>CG: Yes, we are running a series of trips for S1 students to visit Beechbrae Outdoor Centre.</p>	

<p>Statutory Catchment Review</p>	<p>AS: Distributed letter containing full rationale. This will be issued to all stakeholders.</p>	<p>AS to monitor review and feedback as necessary.</p>
<p>Prelim Exams</p>	<p>AS: S4 Prelim TT has been distributed.</p> <p>S5/6 Exam TT will be issued in due course.</p>	<p>AS will bring a draft S5/6 prelim timetable to the next PC meeting</p>
<p>Parental Raised Issues.</p>	<p>Concern on lunch-break being 30 minutes.</p> <p>AS: Following full consultation, we changed from two lunch breaks to three. This means we have around 400 students per break rather than 600 per break.</p> <p>This was necessary to ensure all students were served their food quicker.</p> <p>Given the current kitchen / dining hall facilities it'll remain this way until full school rebuild is complete.</p> <p>It has also meant that there is less disruption to school environment during lunchbreaks.</p> <p>Parents' Evening – is there scope for face-to-face meetings (perhaps, at least for Senior year groups).</p> <p>AS: Given the current facilities, it is difficult.</p> <p>As an on-line appointment is 5 minutes is there opportunity for follow-up meeting.</p> <p>AS: Parents may contact head of House or faculty PTC for additional feedback / discussion.</p>	<p>AS: To be discussed at SLT &amp; ELT.</p>



	<p>Condition of Toilets.</p> <p>AS: This is a daily challenge. It is disappointing to note that the brand new toilets in the Portakabins have been subject to vandalism. We investigate each case and school sanctions are applied.</p> <p>CG: Extended Management Team members are now stationed outside student toilets. Today 240 visits to the toilets were recorded (out-with break &amp; lunchtime).</p>	<p>AS to letter parents and note that the Parent Council also support this initiative and have their concerns about the state the students are leaving the toilets in.</p>
<p>Date of Next meeting</p>	<p>KB: 7<sup>th</sup> December 2023 at 7pm. This will be an online meeting and scheduled to end no later than 8:30pm</p>	



# St Kentigern's Academy Parent Council Thursday, 26<sup>th</sup> October 2023 Head Teacher's Report

The information in this report is in addition to the information shared via school emails, our twitter feed and website.

## School Update

Since our return in August, our school has been a hive of activity and a hub of events, both educational and enriching. The next few pages are designed to give you a snapshot of the vibrant and dynamic life of our school, offering a first-hand glimpse into some of the many experiences that have taken place in our community.



**St Kentigern's Academy @StKentAc · Oct 14**  
 Impressive to see some of our students from St. Kent's join forces with Community Action Blackburn for the Climate Action Town project!  
 Check out their inspiring thoughts on the future from 8 mins in this national video. 🌍 #ClimateAction #YouthVoice



youtube.com  
 Climate Action Towns  
 To protect Scotland from the impacts of climate change, we all need to work together to adapt the ...

You can reply to this conversation...

**St Kents PE Dept @StKentsPE · Sep 28**  
 A brilliant & historic day at cross country... there wasn't a drop of rain! 🌧️  
 Well done everyone! Medalists to follow 🏆🏆🏆



**St Kentigern's Academy @StKentAc · Sep 14**  
 It was wonderful to celebrate the end of transition with our S1s and their families yesterday at our annual welcome mass. The gospel told us about seeds planted in rich soil and we pray that our S1s develop strong, healthy roots in our nurturing environment. #gospelvalues #S1



**St Kentigern's Academy @StKentAc · Sep 26**  
 Great to see our Geographers taking part in field work again. Thanks @WOLCT

**Water of Leith Conservation Trust @WOLCT · Sep 26**  
 @StKentAc Geography higher students doing a great job on their Source to Sea river study. Nice work!



**StK\_DHTSupport @StK\_Support · Oct 5**  
 Thank you to our wonderful @StKentAc captains, ambassadors, staff, parents and carers for coming along to our S1 Subject Showcase tonight! Absolutely fantastic to see our S1's complete their transition journey from primary! ❤️ #CarissimusDeo #StKentsWay



**StKent'sEnglishDept. @StKentsEnglish · Sep 20**  
 Incredibly proud of this lovely BGE pupil whose work will be published in the upcoming Young Writer's book. 📖 What a talent! Thanks to Mrs King for inspiring pupils on the reg. ❤️

Well done! You are amazing! 🌟



**St Kentigern's Academy** @StKentAc · Sep 13  
 🏆 Congratulations to Lottie on achieving Bronze at the ITF TAEKWON-DO WORLD CHAMPIONSHIPS in Tampere, Finland! 🌍 🥋

An awesome achievement, coming oh-so-close to Silver, which was won by the 3-time World Champion from the Netherlands. 🇳🇱

#ITFTaekwondoChamps #Tampere2023



Our Breakfast club is in full swing! All are welcome from 08:30 in the library each morning with Miss Riley. Thanks to our generous partners who have kindly donated all of this cereal! 🍲 🥣 ☀️



**St Kentigern's Academy** @StKentAc · Aug 21  
 Well done to our @YoungSTEMLeader award winners! We are so proud of your achievements and can't wait to see what exciting events you have planned for this year #STEM #TeamStK #TheStKentsWay

**St Kentigern's Academy** @StKentAc

To promote sustainability our @CPAG student group are running this drive.

See details below.

All donations from our community welcome, and can be dropped off at the school office or Mrs Porch's room.



**St Kentigern's Academy** @StKentAc · Oct 3  
 Last week, some students and staff were privileged to visit Arnsberg as part of the West Lothian Twinning Association. The original agreement was signed in 1972 between Arnsberg and West Lothian. It focussed on young people and friendship across borders and mutual understanding.



Finally, in this section, I'm delighted to highlight our ongoing outdoor education program for our S1 students at Beechbrae. This unique experience was selected through a participatory budgeting process, driven by our students' choices and interests. It has been very well received by our students, offering not only valuable life skills but also the chance to engage in challenging and diverse activities. This successful project has inspired us to consider its continuation in the future.

## SQA Results

The report below shows an initial in-school analysis of the results currently available to the school. This will be updated post the appeals process and once the final results from partners, etc. are fully available via the national INSIGHT tool, and shared with a future Parent Council Meeting.

The Students achieved well in this year's SQA examinations, building upon the good results achieved in 2021 -2022. The breakdown of the current results is below with comparisons with the last exam diet and our virtual comparator.

### S4

5+ Level 5 (SQA)	<b>37.2%</b> (up from 36.33%) Virtual Comparator - <b>35.08%</b>
5+ Level 5 (SCQF)	<b>68.4%</b> (up from 62.45%) Virtual Comparator - <b>45.8%</b>
5+ Level 4	<b>91.2%</b> (up from 88.16%) Virtual Comparator - <b>76.72%</b>
5+ Level 3	<b>93.6%</b> (up from 92.65%) Virtual Comparator - <b>82.56%</b>

### S5 (% generated using S4 roll)

5+ Level 6 (SQA)	<b>11.89%</b> (down from 12.93%) Virtual Comparator – <b>14.02%</b>
5+ Level 6 (SCQF)	<b>39.34%</b> (up from 37.50%) Virtual Comparator - <b>19.92%</b>
3+ Level 6 (SQA)	<b>30.33%</b> (down from 33.19%) Virtual Comparator – <b>29.18%</b>
3+ Level 6 (SCQF)	<b>54.51%</b> (down from 57.33%) Virtual Comparator – <b>37.58%</b>
1+ Level 6 (SQA)	<b>48.36%</b> (down from 54.31%) Virtual Comparator – <b>48.77%</b>
1+ Level 6 (SCQF)	<b>89.34%</b> (up from 83.62%) Virtual Comparator – <b>56.6%</b>

### S6 (% generated using S4 roll)

1+ Level 7 (SQA)	<b>24.24%</b> (up from 22.12%) Virtual Comparator – <b>16.15%</b>
1+ Level 7 (SCQF)	<b>30.3%</b> (up from 24.42%) Virtual Comparator – <b>21.21%</b>

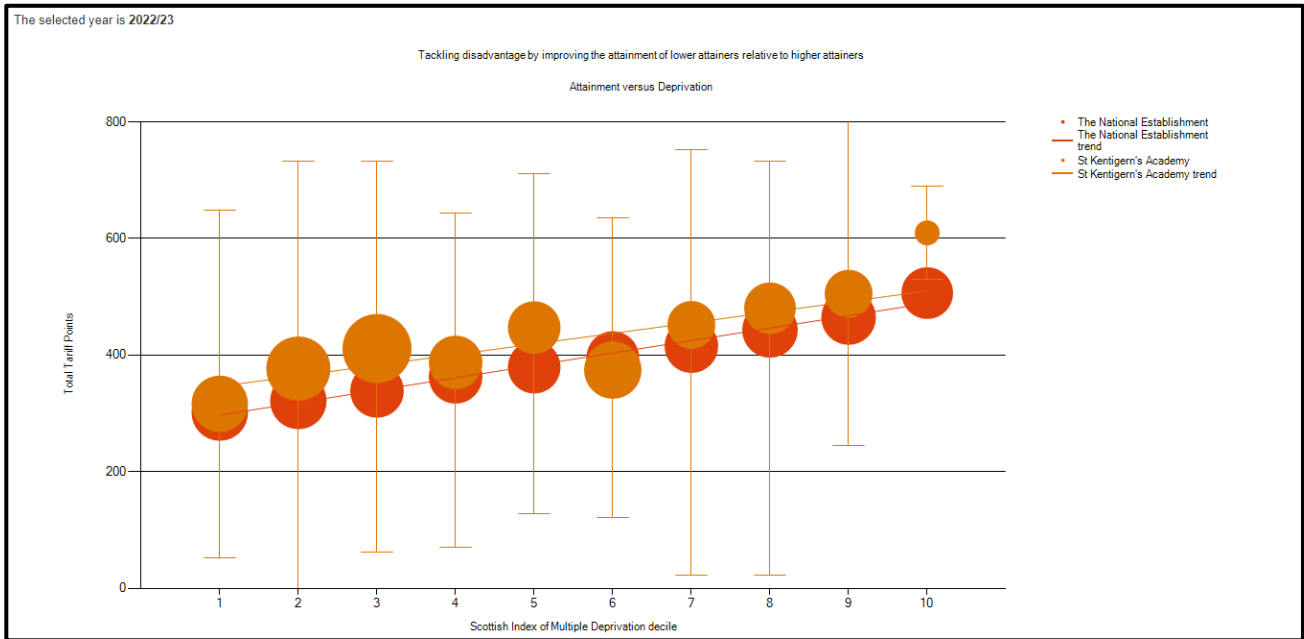
### Cumulative S6 Results (% generated using S4 roll)

5 + @ Level 6 (SQA)	<b>28.57%</b> (down from 29.03%) Virtual Comparator – <b>23.20%</b>
5 + @ Level 6 (SCQF)	<b>51.52%</b> (up from 49.77%) Virtual Comparator – <b>31.73%</b>
3 + @ Level 6 (SQA)	<b>41.13%</b> (down from 42.86%) Virtual Comparator – <b>36.32%</b>
3 + @ Level 6 (SCQF)	<b>64.5%</b> (up from 61.75%) Virtual Comparator – <b>45.93%</b>
1 + @ Level 6 (SQA)	<b>60.17%</b> (up from 58.99%) Virtual Comparator – <b>53.42%</b>
1 + @ Level 6 (SCQF)	<b>85.28%</b> (up from 78.34%) Virtual Comparator – <b>59.75%</b>
5+ @ Level 5 (SQA)	<b>57.58%</b> (down from 58.99%) Virtual Comparator – <b>50.87%</b>
5+ @ Level 5 (SCQF)	<b>74.03%</b> (up from 73.73%) Virtual Comparator – <b>61.47%</b>

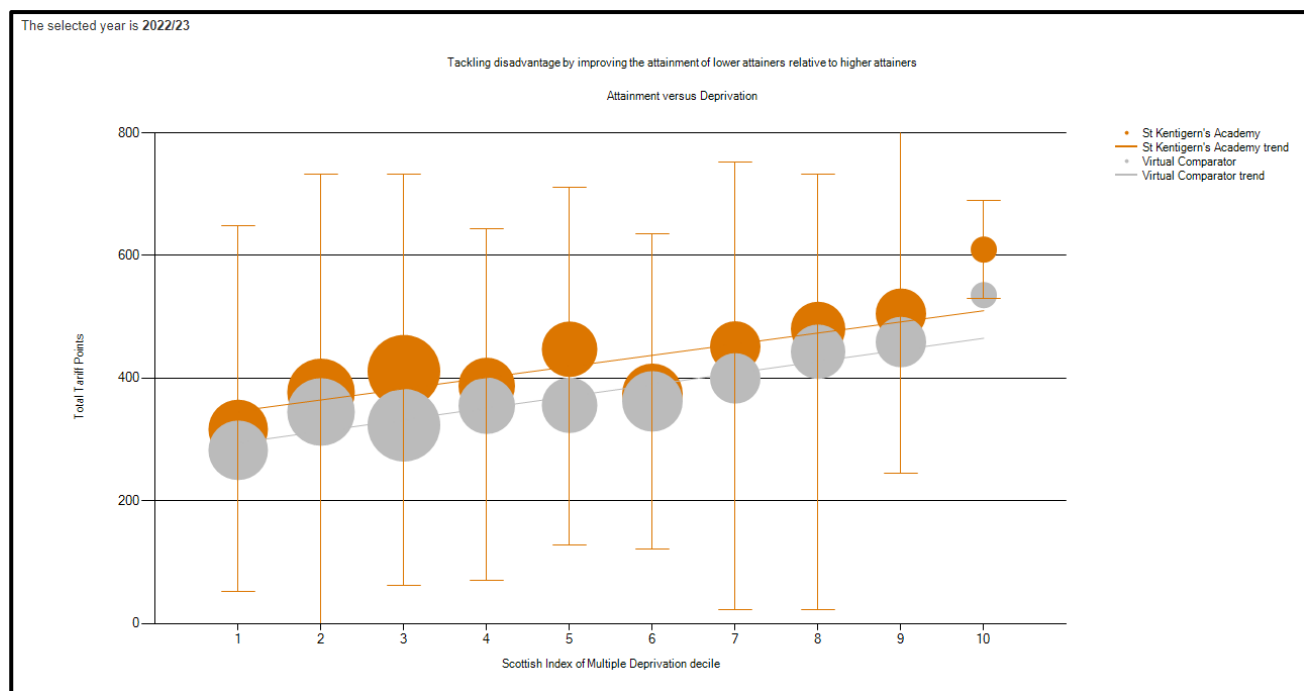
Our strong tracking and study support strategy meant there were no surprises and most students achieved as expected or better. And as can be seen, we performed better than the virtual comparator (expected level) in **18** of the **20** national measures.

In addition, Students in S4/S5 and S6 continued to achieve on or above National performance in **26** of the **30** SIMD Decile groups across the 3 year groups and likewise in **27** of the **30** against our Virtual Comparator.

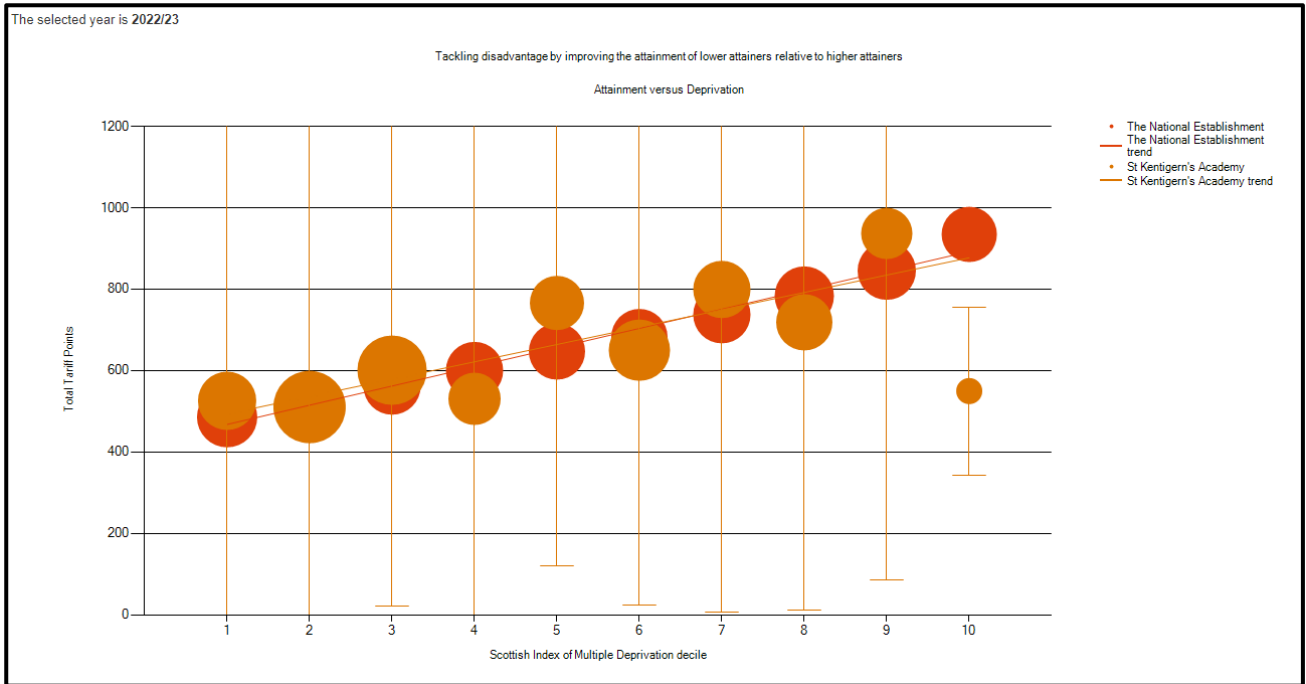
### S4 Attainment V Deprivation (National)



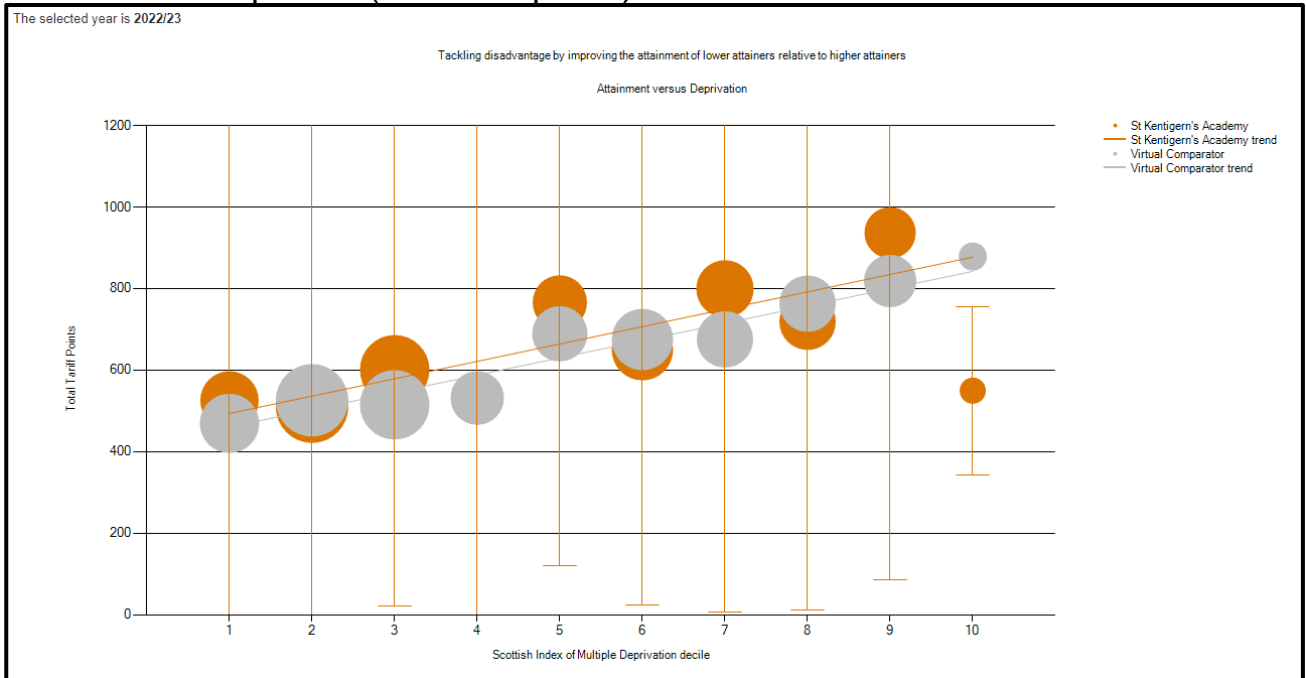
### S4 Attainment V Deprivation (Virtual Comparator)



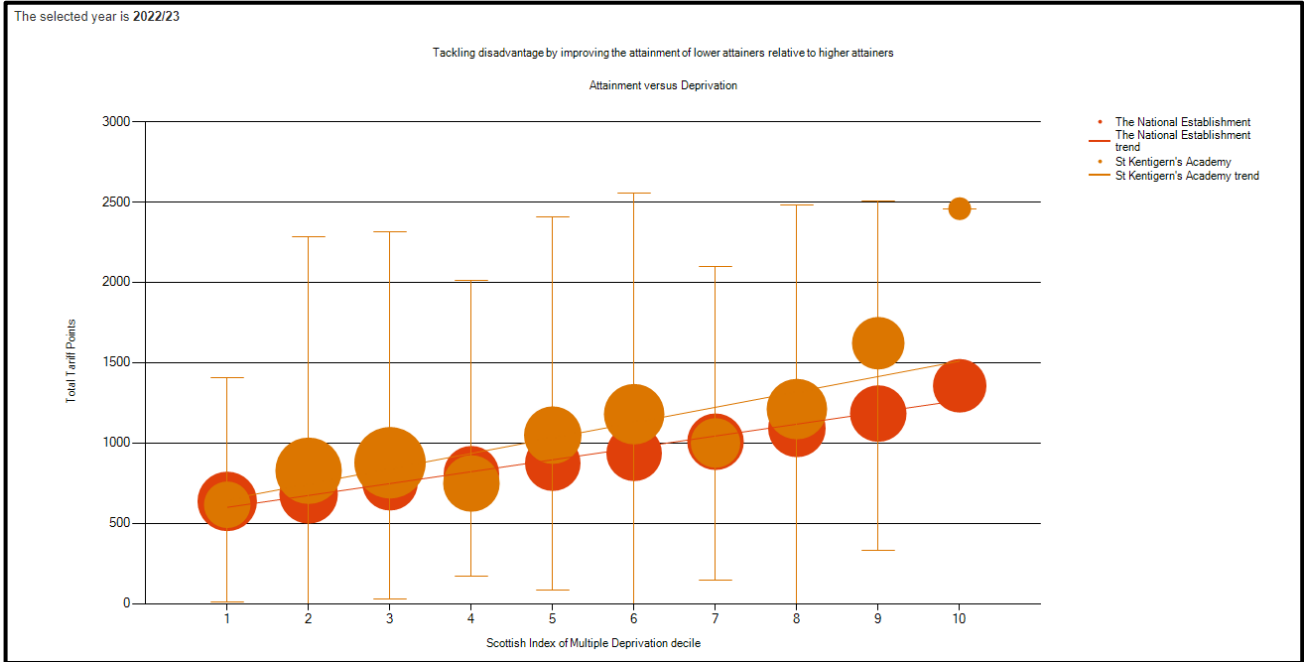
## S5 Attainment V Deprivation (National)



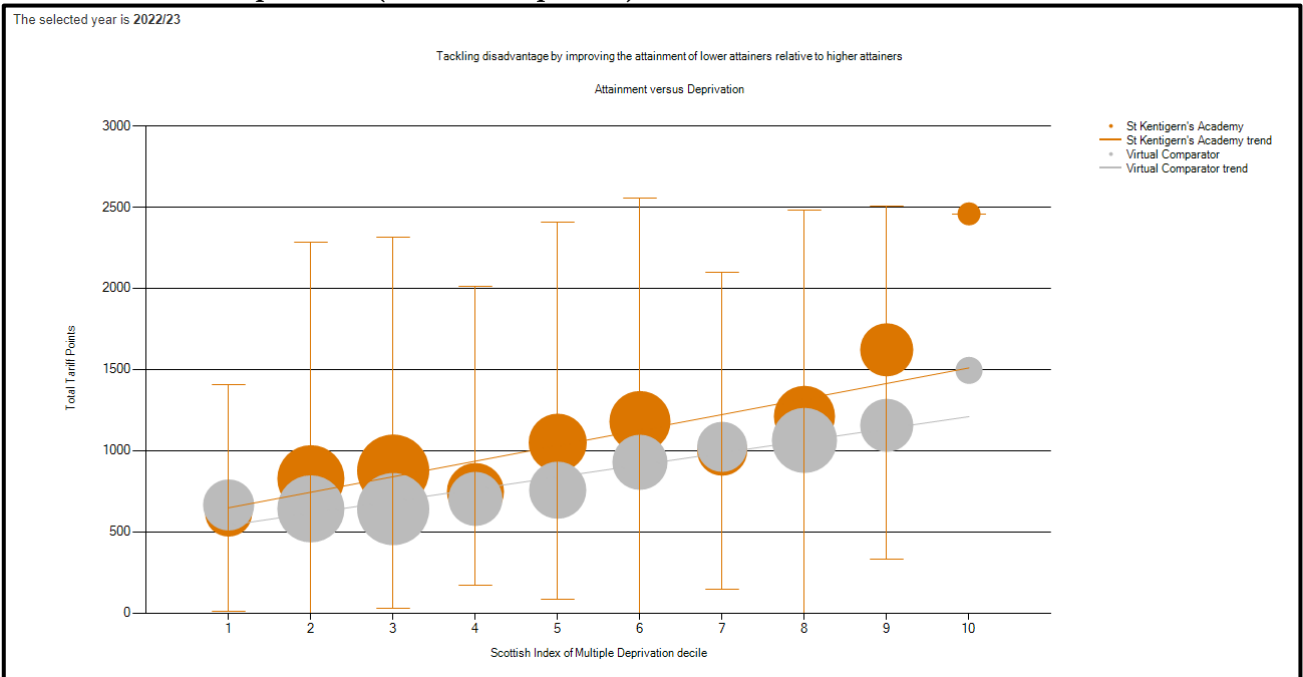
## S5 Attainment V Deprivation (Virtual Comparator)



## S6 Attainment V Deprivation (National)



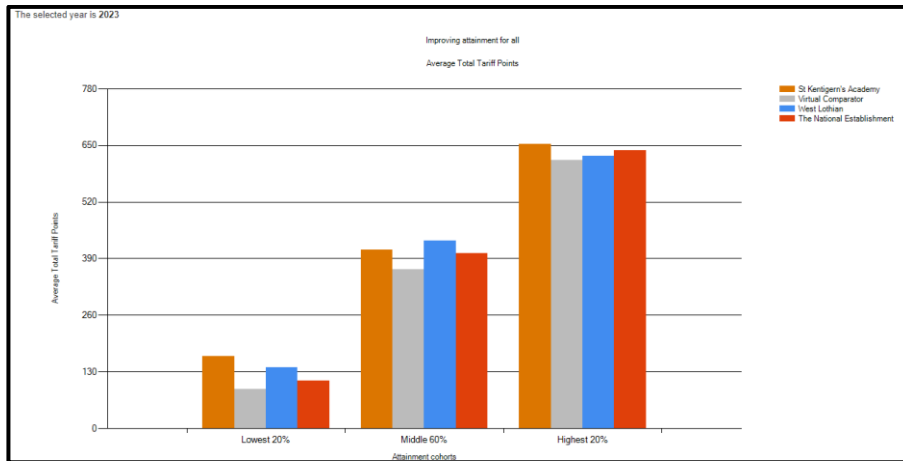
## S6 Attainment V Deprivation (Virtual Comparator)



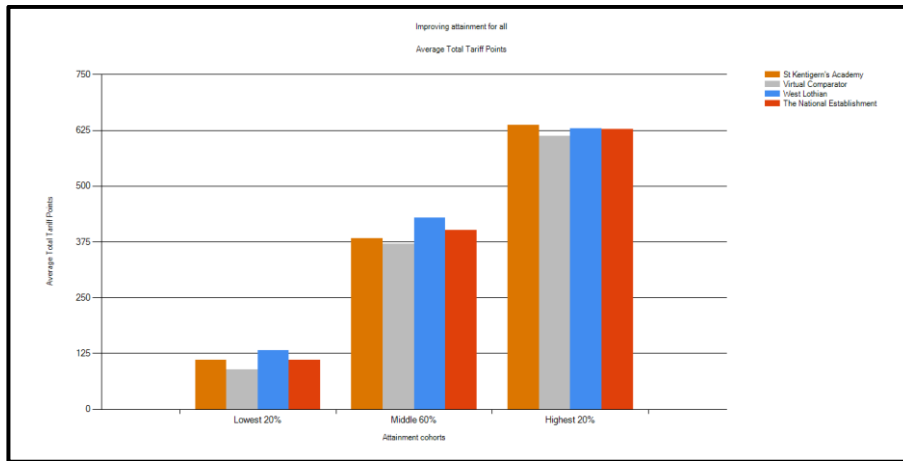


# Improving Attainment for All

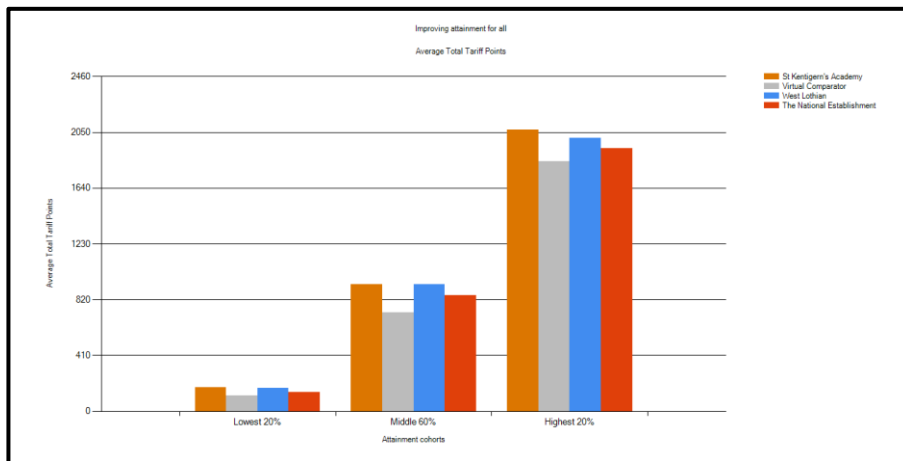
S4



S5



S6



The school continues to perform very well in literacy and numeracy by the end of S4, as the figures below show. This pattern is repeated and improved upon by the end of S5 and S6.

	Year	% Level 4 Literacy	% Level 4 Numeracy	% Level 5 Literacy	% Level 5 Numeracy
St Kentigern's Academy	2023	96%	94.4%	92.8%	68%
Virtual Comparator	2023	91%%	87.2%	70.4%	56.92%

### **Learning and Teaching**

Our priorities for Learning and Teaching are improving the consistency and quality of learner conversations in the senior phase so that young people understand their next steps and inclusive practice across all sections of the school, enabling all young people to access our curriculum at with appropriate pace and challenge at their level.

Our new S1 have settled well, and whilst sizeable group, we are very happy with the way they have integrated into the school community and are starting to play their part.

Mrs Gill has started to carry out in depth department review activities and we have a council Validated Self Evaluation visit to have external validation of our standards of teaching and learning in the school. We will share more detail about this at our next meeting.

### **Partnership**

We continue to have a full-time counsellor available for students to access when they have the need. Counsellors are professionally qualified and registered. They offer a confidential, one-to-one service in-school with your child.

We have a member of the Financial Inclusion Team from West Lothian Council based in St Kent's. Jennie Fraser is in school to provide support for families and to help them receive the financial aid and benefits they are entitled to. This may be because they are unaware of their entitlement, the rules are complex or because they have been wrongly refused.

More information is also available online at:

<https://stkentigernsacademy.westlothian.org.uk/article/71418/Help-with-School-Costs>

[https://stkentigernsacademy.westlothian.org.uk/Support\\_for\\_Parents](https://stkentigernsacademy.westlothian.org.uk/Support_for_Parents)

Our cost of the school day group has created three 'Help Yourself Trolleys' containing essential personal care items for the use of students. They are also coordinating our winter clothing collection to help us widen our offer of appropriate winter clothes and jackets for our community.

We have also been fortunate to receive £750 of vouchers from the Fauldhouse Hub and another donation of £700 from three of the local St Vincent De Paul groups. All these funds are being used to support our most disadvantaged learners.

## People

Since we last met we have had the sad death of Hamdan Aslam in June. I will speak about his loss as part of the main agenda.

Last month also marked the 1-year anniversary of the loss of Geraldine Baillie, our family link worker. Plans are in place to develop a lasting memorial to her, and the students are developing plans for this.



Our School captains for 2023 – 2024 are:

### **Columba House**

- Blake Gaffney and Fern Hughes

### **Margaret House**

- Betty Kanjewe and Keeva Murdock

### **Ninian House**

- Grace Anderson and Brian Hannah

There have been several changes to staff since the last meeting.

We have said farewell to the following colleagues:

- Dr Love (RE – end of fixed term post)
- Miss Charles (PE – Moved to Sinclair Academy)
- Miss O'Connor (HFT – Seconded to acting Principal Teacher post at St Margaret's)
- Miss Quinn (Science – 1-year sabbatical)
- Mr Burrows (Hub – promoted to Principal Teacher)
- Mr Farrell (Modern Languages - *Probationer Teacher*)
- Mr Henderson (Science – Seconded to acting Principal Teacher post at St Margaret's)
- Mrs Cameron (Music - Moved to Sinclair Academy)
- Mrs Dianne Aitchison (PSW)
- Mrs Doak (RE – Seconded to acting Principal Teacher post at St Margaret's)
- Mrs White (Physical Education - *Probationer Teacher*)

And we have welcomed the following colleagues to St Kent's:

- Miss Caulfield (Geography)
- Miss Cowan (Physical Education - *Probationer Teacher*)
- Miss Igbesoko (Music)
- Miss Martin (Chemistry - *Probationer Teacher*)
- Miss McElhinney (English)
- Miss Taylor (Science)
- Mrs Cameron (Education Officer)

In addition, since our last meeting the following teachers got married:

- Mrs Duff, *nee McMabon* (English)
- Mrs Moroney, *nee McVittie* (English)

Finally, since the last meeting, Ms Rossi has returned from her maternity leave.

### **Building Works**

Miss Cameron will give a full update on our current situation as part of the main agenda so I won't say anything further in this report.

### **Culture and Ethos**

We have had a very successful S1 Information evening, attended by over 170 parents and an S1 Family Mass to mark the end of their transition. Our first House Service for the year, for Ninian House, has taken also place this term.

Finally, we are eagerly anticipating the three night run of our school show, "Hairspray," set to dazzle at the Bathgate Regal. The excitement is palpable as we look forward to witnessing our exceptionally talented students take the stage. If you haven't already secured your tickets, they are still available at the school office. Don't miss this captivating showcase of our students' talents!

### **Future Dates**

Senior PSE Conferences	30 Oct -3 Nov 2023
School Show	7 - 9 November 2023
S1 Settling-in Interviews	13 -17 November 2023
St Margaret House Service	16 November 2023
P7 Information Evening	23 November 2023
Champions League Trip to Manchester	28 November 2023
Senior Prelims Window 1	04 – 21 December 2023
Parent Council	07 December 2023

### **Parents Evenings**

All Parents' evenings this session are, with the exception of the P7 evening, are online with booking information shared no later than 1 week prior to the meetings

S1	16 November 2023
S2	13 December 2023
S3	06 March 2024
S4	27 March 2024
S5/6	22 February 2024
P7	12 June 2024